

The Growth of Passive

What is happening, and why?

Craig J. Lazzara, CFA
Aye M. Soe, CFA

September 20, 2018

S&P Dow Jones
Indices

A Division of **S&P Global**

“Active investing has been subjected to increasing abuse, particularly by those whose opinions are driven by the persistent accumulation of hard data and logical arguments.”

– Charles D. Ellis, “In Defense of Active Investing,”
Financial Analysts Journal, 2015

One of the most significant developments in modern financial history...

- The first institutional index fund launched in 1971.
- First S&P 500 mutual fund tracker launched (barely) in 1976.
- The first ETF (also tracking the S&P 500) launched in 1993.
- Passive assets were negligible for many years.
- Today – 20+ percent of U.S. equity capitalization is held in passive portfolios.

The Rise of Passive

- Evidence
- Explanations
- Controversy

Evidence

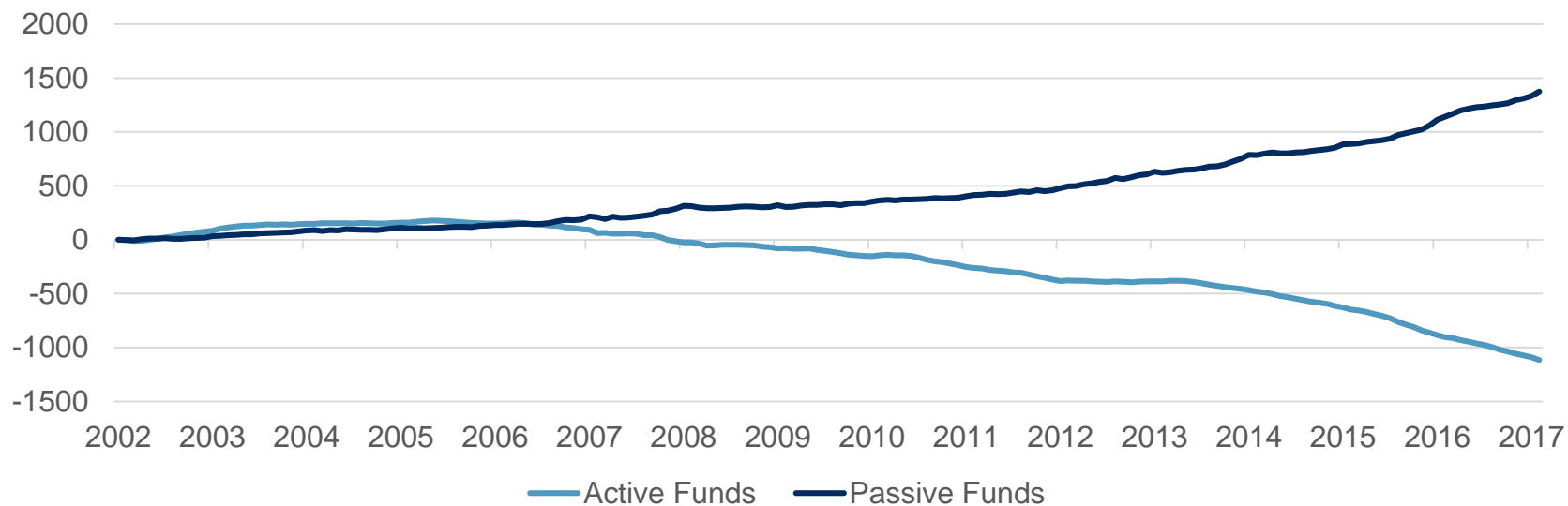
Some Early Observations

“Contrary to their oft articulated goal of outperforming the market averages, investment managers are not beating the market: The market is beating them.” – Charles D. Ellis, “The Loser’s Game, *Financial Analysts Journal*, 1975

“A respect for evidence compels me to incline toward the hypothesis that most portfolio decision makers should go out of business – take up plumbing, teach Greek, or help produce the annual GNP by serving as corporate executives.” – Paul A. Samuelson, “Challenge to judgment,” *Journal of Portfolio Management*, 1974

Divergence in Asset Flows....

US Equity Net Fund flows (\$bn)



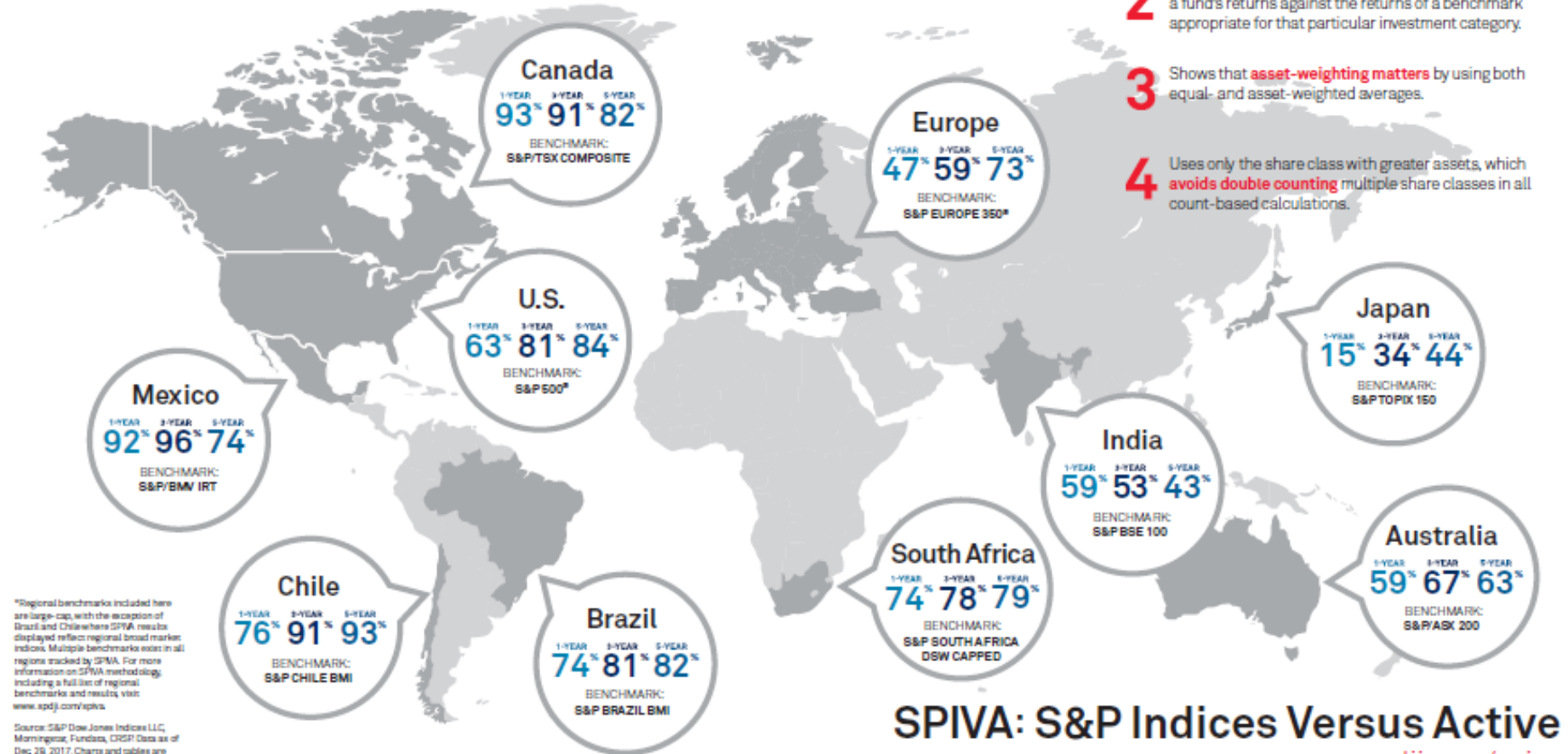
Category	Active			Passive		
	Estimated Net Flows Jan 2018 (\$M)	1 Year (\$M)	Assets Jan 2018 (\$B)	Estimated Net Flows Jan 2018 (\$M)	1 Year (\$M)	Assets Jan 2018 (\$B)
U.S. Equity	(24,028)	(211,217)	4,479	41,126	233,238	3,855
Sector Equity	87	(16,706)	438	7,930	45,778	512
International Equity	14,998	49,485	2,135	27,178	214,195	1,339
Allocation	(2,753)	(25,966)	1,329	1,128	4,789	70
Taxable Bond	25,413	194,333	2,633	22,608	210,626	1,109
Municipal Bond	7,824	32,600	670	388	5,191	291
Alternative	2,662	4,550	177	2,699	6,853	57
Commodities	1,240	2,516	311	1,023	2,760	696
All Long Term	25,442	29,595	12,172	104,079	723,432	7,928

SPIVA® Around the World

Percentage of active funds outperformed by benchmarks* over 1-, 3-, and 5-year periods

The SPIVA Difference

- 1 Accounts for the entire opportunity set—not just the survivors—thereby **eliminating survivorship bias**.
- 2 Applies an **apples-to-apples comparison** by measuring a fund's returns against the returns of a benchmark appropriate for that particular investment category.
- 3 Shows that **asset-weighting matters** by using both equal- and asset-weighted averages.
- 4 Uses only the share class with greater assets, which **avoids double counting** multiple share classes in all count-based calculations.



*Regional benchmarks included here are large-cap, with the exception of Brazil and Chile where SPIVA results displayed reflect regional broad market indices. Multiple benchmarks exist in all regions tracked by SPIVA. For more information on SPIVA methodology including a full list of regional benchmarks and results, visit www.spdji.com/spiva.

Source: S&P Dow Jones Indices LLC, Morningstar, Funddata, CRSP Data as of Dec 31, 2017. Charts and tables are provided for illustrative purposes. Past performance is no guarantee of future results.

SPIVA: S&P Indices Versus Active

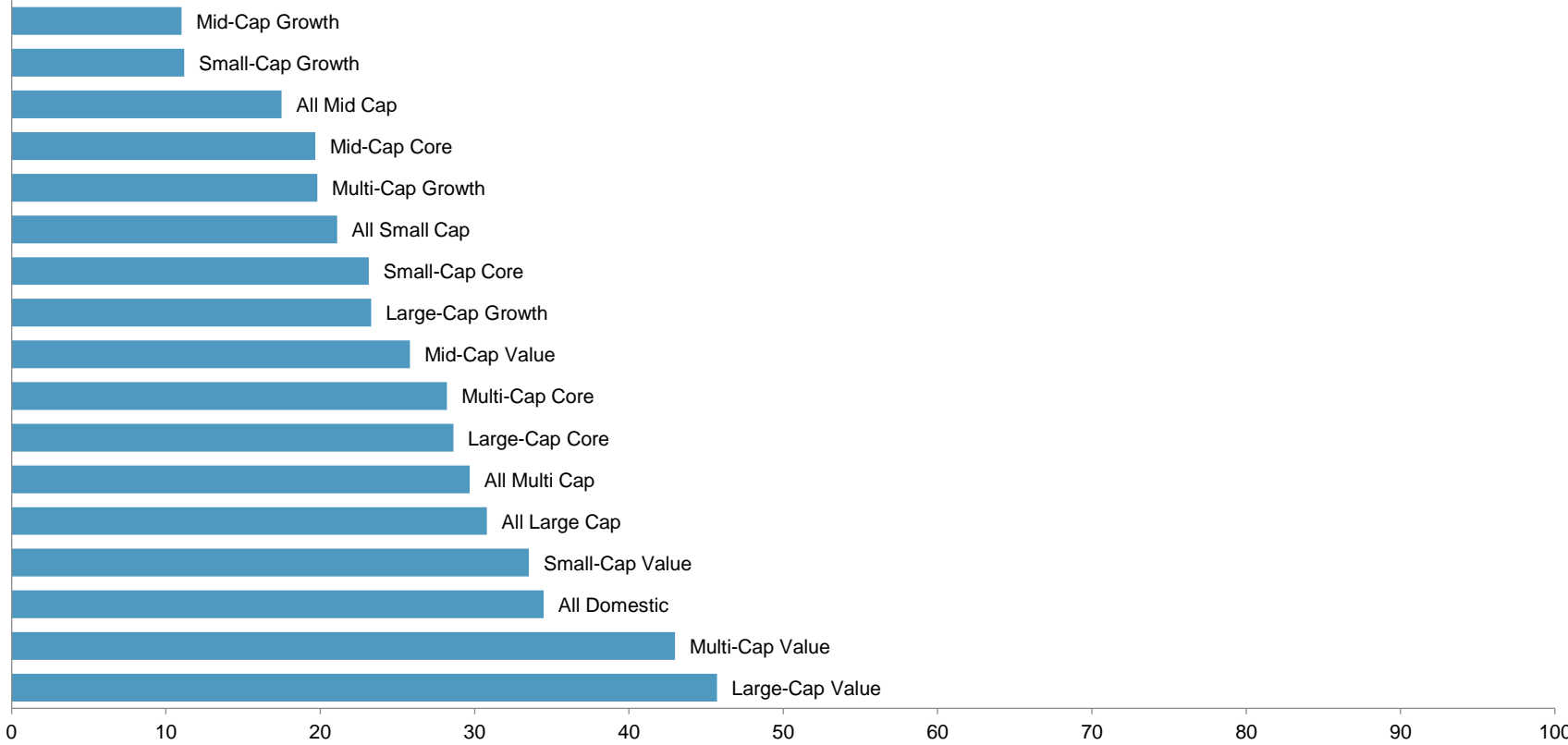
www.spdji.com/spiva

S&P Dow Jones Indices

A Division of S&P Global

For Financial Professionals Only

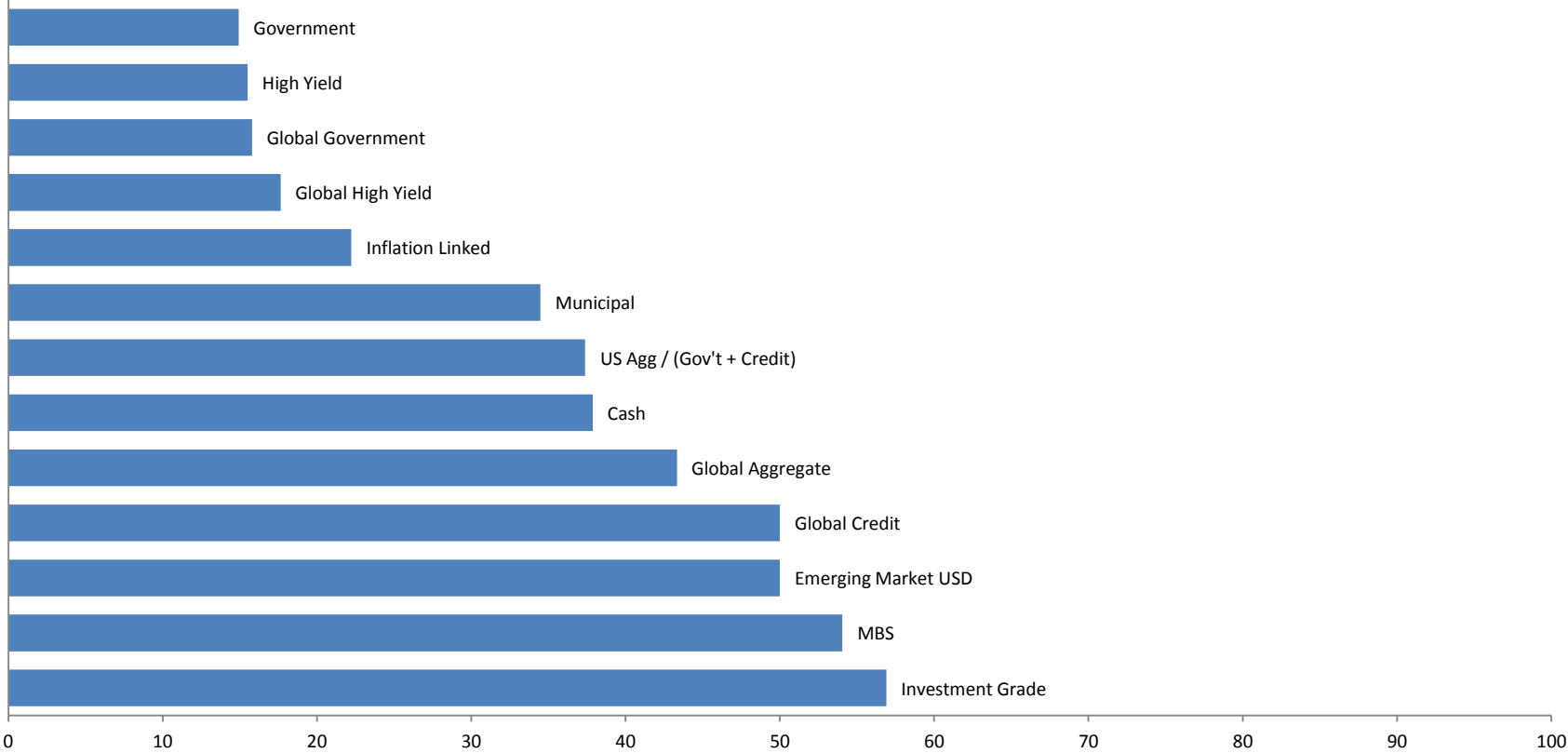
Most Institutional Equity Managers Underperform



Percentage outperforming over 10 years, gross of fees

Source: S&P Dow Jones Indices LLC, eVestment Alliance. Data as of Dec. 31, 2016. Past performance is no guarantee of future results. Chart is provided for illustrative purposes only.

Most Institutional Bond Managers Underperform



Percentage outperforming over 10 years, gross of fees

Source: S&P Dow Jones Indices LLC, eVestment Alliance. Data as of Dec. 31, 2016. Past performance is no guarantee of future results. Chart is provided for illustrative purposes only.

Successful Equity Performance Does Not Persist

US Equity Funds in Three Consecutive Years

Fund Category	% Repeating in Top Quartile
All Domestic Equity	2.33%
Large Cap	0.93%
Mid Cap	0.00%
Small Cap	3.85%
Persistence if Random	6.25%

Source: S&P Dow Jones Indices LLC, CRSP. Data as of March 31, 2018. Table is provided for illustrative purposes. Past performance is no guarantee of future results.

Successful Bond Performance Does Not Persist

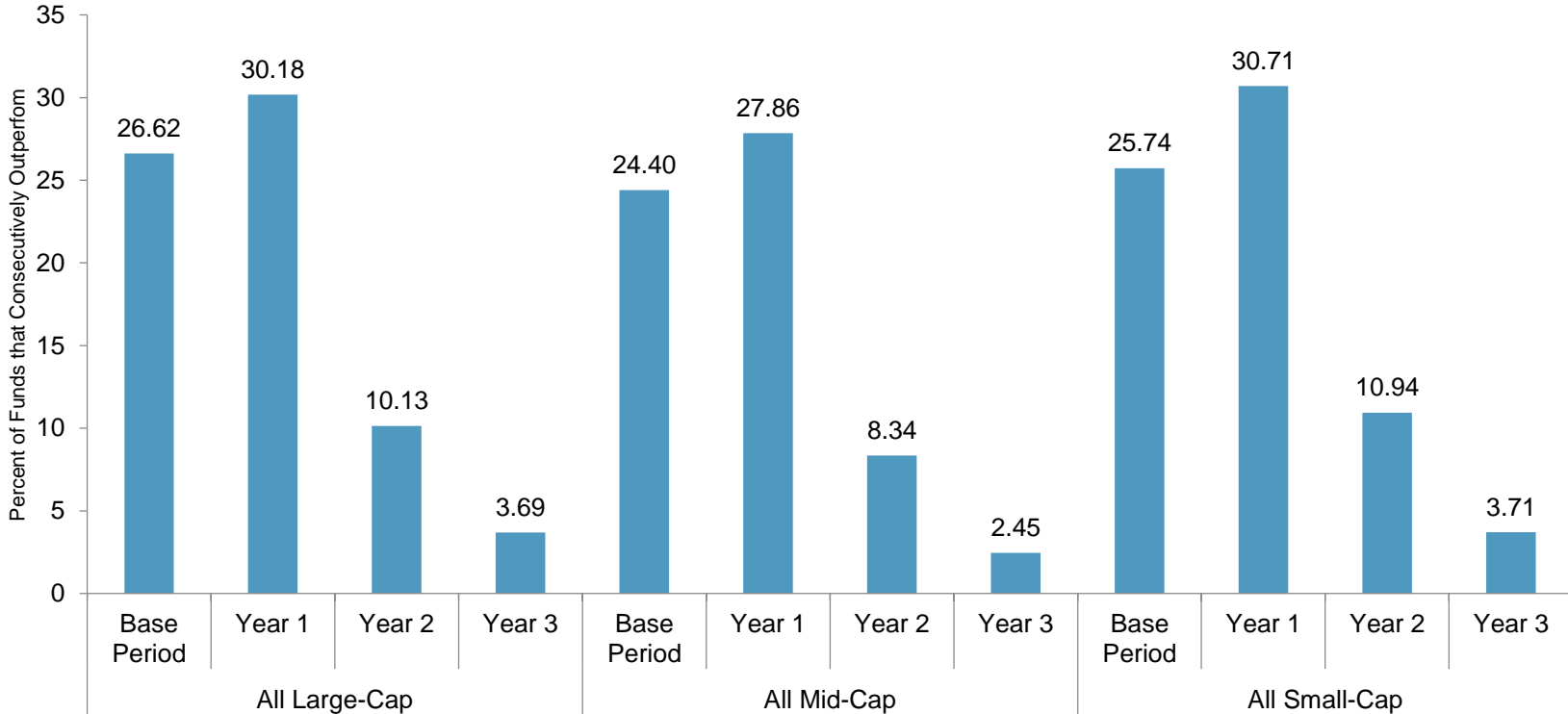
US Fixed Income Funds in Three Consecutive Years

Fund Category	% Repeating in Top Quartile
Government - Long	7.14%
Investment Grade - Long	4.35%
Investment Grade - Intermediate	2.04%
High Yield	1.96%
Persistence if Random	6.25%

Source: S&P Dow Jones Indices LLC, CRSP. Data as of March 31, 2018. Table is provided for illustrative purposes. Past performance is no guarantee of future results.

Outperformance is Fleeting

Average Rolling Quarterly Outperformance Persistence from 2000 to 2017



“Base Period” represents the percentage of funds that outperformed the benchmark over the past three years (the “winners”). Year 1, Year 2, and Year 3 then show what percentage of the “winners” outperformed in the following years. To calculate what percentage of the original group of funds outperformed across all time periods, multiply the results. For example, $26.62\% \times 10.13\% = 2.69\%$ of large-cap funds outperformed in the base period AND year 1 AND year 2.

Source: S&P Dow Jones Indices LLC, CRSP. Data as of Sep. 30, 2017. Past performance is no guarantee of future results. Chart is provided for illustrative purposes only.

Fees Contribute to Underperformance – Equity

Percentage of Managers Underperforming Over 10 Years

Fund Category	Institutional Accounts (Net of Fees)	Institutional Accounts (Gross of Fees)
All Domestic Equity	76.31%	65.52%
Large Cap	79.58%	69.20%
Mid Cap	92.02%	82.51%
Small Cap	90.61%	78.91%

Source: S&P Dow Jones Indices LLC, CRSP. Data as of Dec. 31, 2016. Table is provided for illustrative purposes. Past performance is no guarantee of future results.

Fees Contribute to Underperformance – Bonds

Percentage of Managers Underperforming Over 10 Years

Fund Category	Institutional Accounts (Net of Fees)	Institutional Accounts (Gross of Fees)
Investment Grade	48.28%	43.10%
U.S. Aggregate	69.53%	62.62%
High Yield	93.80%	84.50%
Global Aggregate	73.33%	56.67%
Global High Yield	100.00%	82.35%

Source: S&P Dow Jones Indices LLC, CRSP. Data as of Dec. 31, 2016. Table is provided for illustrative purposes. Past performance is no guarantee of future results.

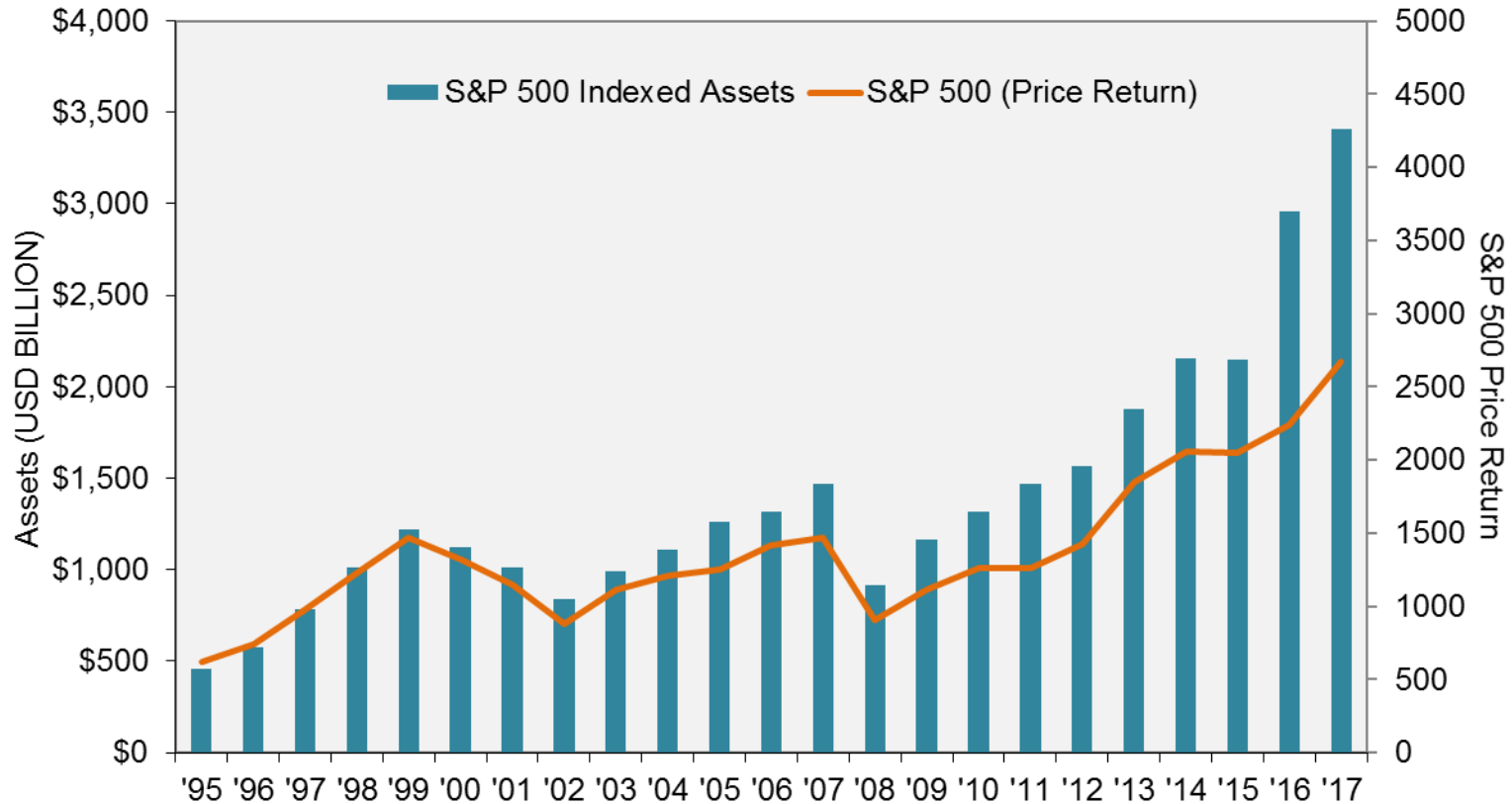
Explanations

Why Is Active Management So Difficult?

- Cost
- Professionalization and Market Efficiency
- Return Skewness
- Index Innovation

Assets Tracking the S&P 500

Approximately USD 3.4 Trillion Track the S&P 500



Source: S&P Dow Jones Indices. Data as of Dec. 31, 2017. Charts are provided for illustrative purposes. Past performance is no guarantee of future results.

**S&P Dow Jones
Indices**

A Division of S&P Global

No Natural Source of Alpha

- Investor A can be above average only if Investor B is below average.
- The total outperformance of the winners must equal the total underperformance of the losers (before costs).
- The source of the winners' positive alpha is the losers' negative alpha.
- When funds shift from active to passive, the least skillful active managers lose the most assets.

Might Active Management Become Even More Difficult?

	A	B
Total Market Cap	\$20.0 T	\$20.0 T
% actively managed	100%	90%
Value Actively Managed	\$20.0 T	\$18.0 T
Value Outperforming	\$10.0 T	\$9.0 T
Value Underperforming	\$10.0 T	\$9.0 T
Average Underperformance (%)	5%	4%
Total Underperformance (\$)	\$500 B	\$360 B

A hypothetical 10% reduction in active AUM led to a hypothetical 28% reduction in outperformance.

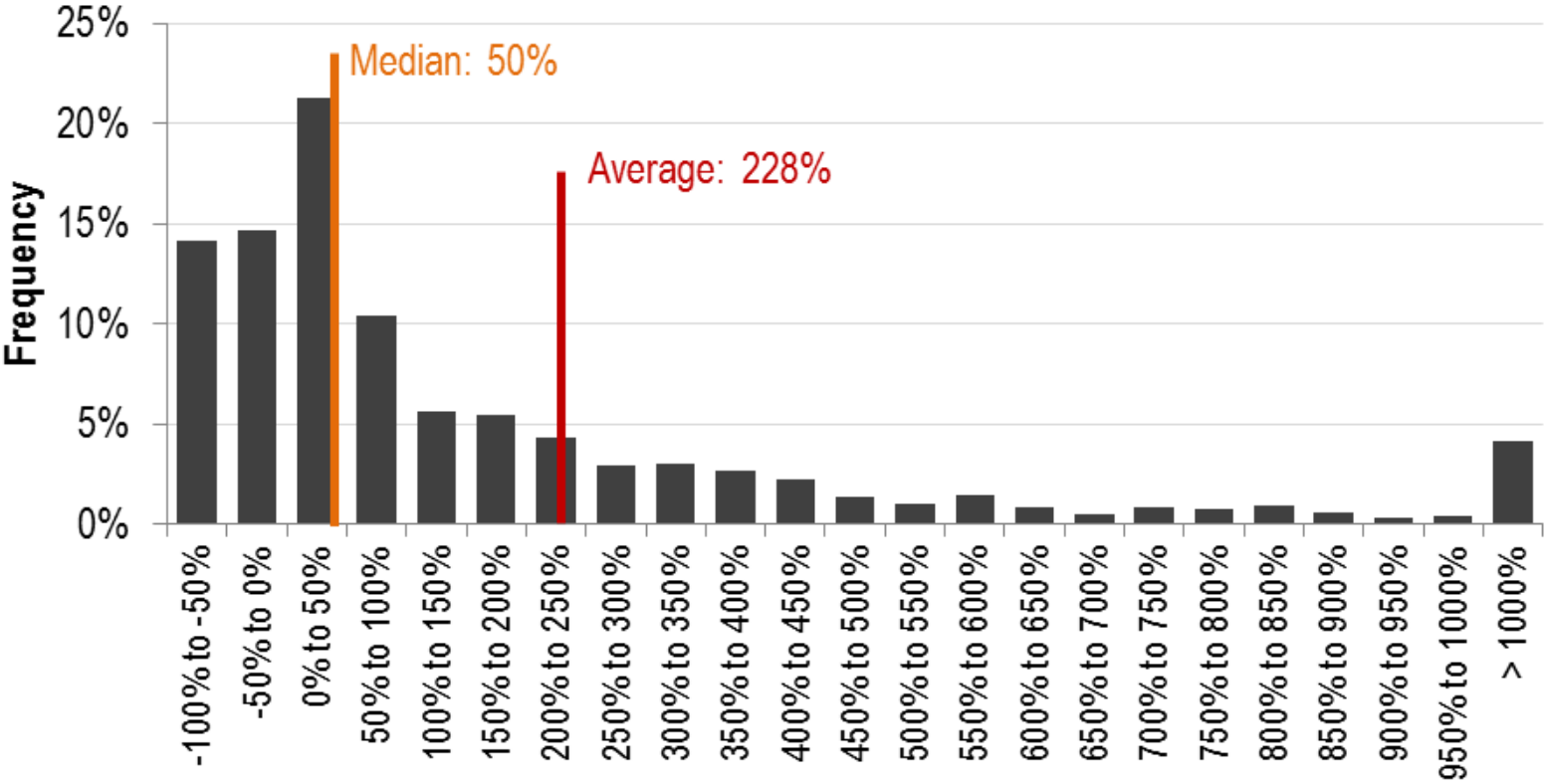
Source: S&P Dow Jones Indices. Chart is for illustrative purposes only and reflects hypothetical performance.

Skewness

- Stock returns are not normally distributed.
 - A stock can go down only 100%,
 - But can appreciate by much more than that.
- Simple definition of positive skewness: average return > median return
- How often does average return exceed median return?
 - For S&P 500 (1991-2017): 23 of 27 years
 - In U.S. (1926-2016), 4% of stocks “explain the net gain for the entire U.S. stock market...as other stocks collectively matched Treasury bills.”

Source: S&P Dow Jones Indices; Bessembinder, Hendrik, “[Do Stocks Outperform Treasury Bills?](#),” November 2017. Past performance is no guarantee of future results.

Historical Skewness for S&P 500



Source: S&P Dow Jones Indices LLC, FactSet. Data from Dec. 31, 1997 through Dec. 31, 2017. Past performance is no guarantee of future results. Chart is provided for illustrative purposes.

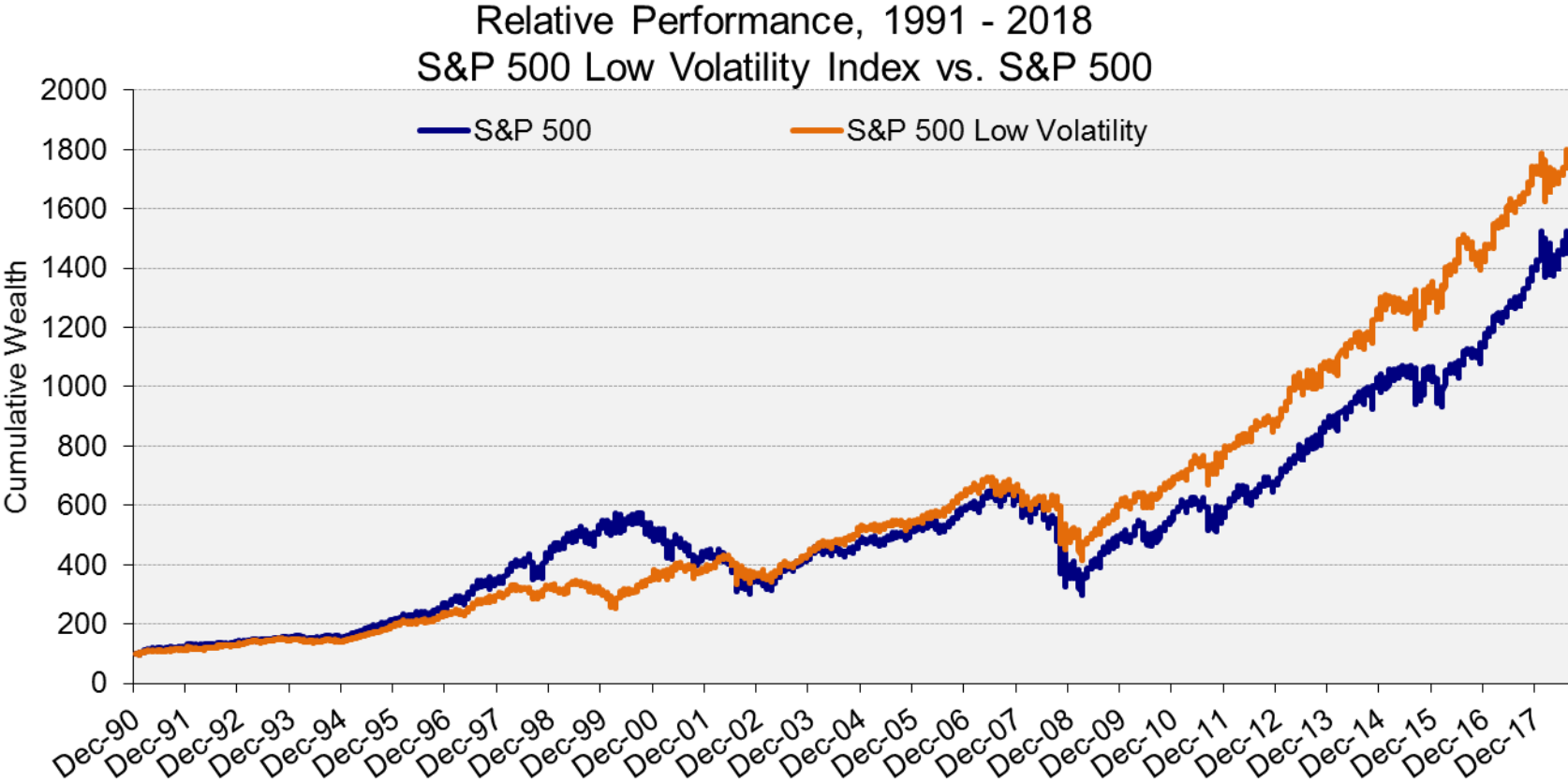
Consequences of Skewness

- Handicaps active managers
 - 50% of selections outperform the median return
 - Less than 50% outperform the average return
- Probability of outperformance rises when portfolios hold more stocks
- Suggests possible equilibrium between active and passive
 - If majority of active managers underperform by “a little,” then
 - A minority of active managers can outperform by “a lot”

Index Evolution

Indices	Examples	Attributes
Broad Market	S&P 500 [®] , S&P Global BMI	<ul style="list-style-type: none">• Capitalization-weighted• Aim to represent an asset class
Specialized	S&P MidCap 400 [®] , S&P Select Sectors	<ul style="list-style-type: none">• Focus on a subset of the broader market• Typically capitalization-weighted
Factor/ Smart Beta/ Strategic Beta	S&P 500 Low Volatility, S&P 500 Equal Weight	<ul style="list-style-type: none">• Focus on specific <i>patterns</i> or <i>characteristics</i>• Better “indicize” active strategies• Typically <i>not</i> capitalization-weighted

S&P 500 Low Volatility Index



Source: S&P Dow Jones Indices. Data from Dec. 31, 1990 through July 31, 2018. Charts are provided for illustrative purposes. Past performance is no guarantee of future results. This chart may reflect hypothetical historical performance. Please see the Performance Disclosure at the end of this document for more information regarding the inherent limitations associated with back-tested performance.

S&P Dow Jones
Indices

A Division of S&P Global

Average Monthly Returns and Spreads

		Average Monthly Return			
	# of Mos	S&P 500 Low Volatility	S&P 500	Low Volatility minus S&P 500	Hit rate
Less than -2.45%	55	-2.81%	-5.61%	2.80%	87%
Between 0 and -2.45%	55	-0.63%	-1.42%	0.79%	76%
Between 0 and 2.47%	111	1.15%	1.26%	-0.11%	47%
Greater than 2.47%	110	3.27%	4.93%	-1.66%	18%

Source: S&P Dow Jones Indices. Data from Dec. 31, 1990 through July 31, 2018. Charts are provided for illustrative purposes. Past performance is no guarantee of future results. This chart may reflect hypothetical historical performance. Please see the Performance Disclosure at the end of this document for more information regarding the inherent limitations associated with back-tested performance.

Controversy

Active Managers' Challenges to Indexing

- Common Ownership
- Stewardship
- Bubbles
- Market Efficiency

Common Ownership

Complaint: Ownership of a substantial fraction of most competitors in an industry leads to diminished competition and higher prices.

Response

- Confuses correlation with causation.
- Econometric argument not universally accepted.
- Most frequently-cited study deals with airline tickets.
 - Airlines are 0.5% of the S&P 500.
 - Why increase revenue for 0.5% of a portfolio and raise expenses for the other 99.5%?

Stewardship

Complaint: Index funds have no incentive to engage with corporate management on governance issues.

Response

- Index funds are permanent capital. This gives them a greater incentive to engage with corporate management, not a lesser incentive.
- Index funds may be locked into their investments, but their clients are not.
- The three largest indexers have all enlarged their corporate engagement staff, and been quite vocal about governance issues.

Bubbles

Complaint: Flows into index funds cause distortions in the pricing of index constituents; “too much” money going into index funds makes it hard for active managers to compete.

Response

- Index flows do not cause distortions in relative valuation, since index buy programs depend on pre-existing constituent weights.
- There may be a momentum effect as underperforming managers are fired, but
 - It would still occur in the absence of indexing.
 - Indexing reduces this effect because index funds are more diversified than active portfolios.

Market Efficiency

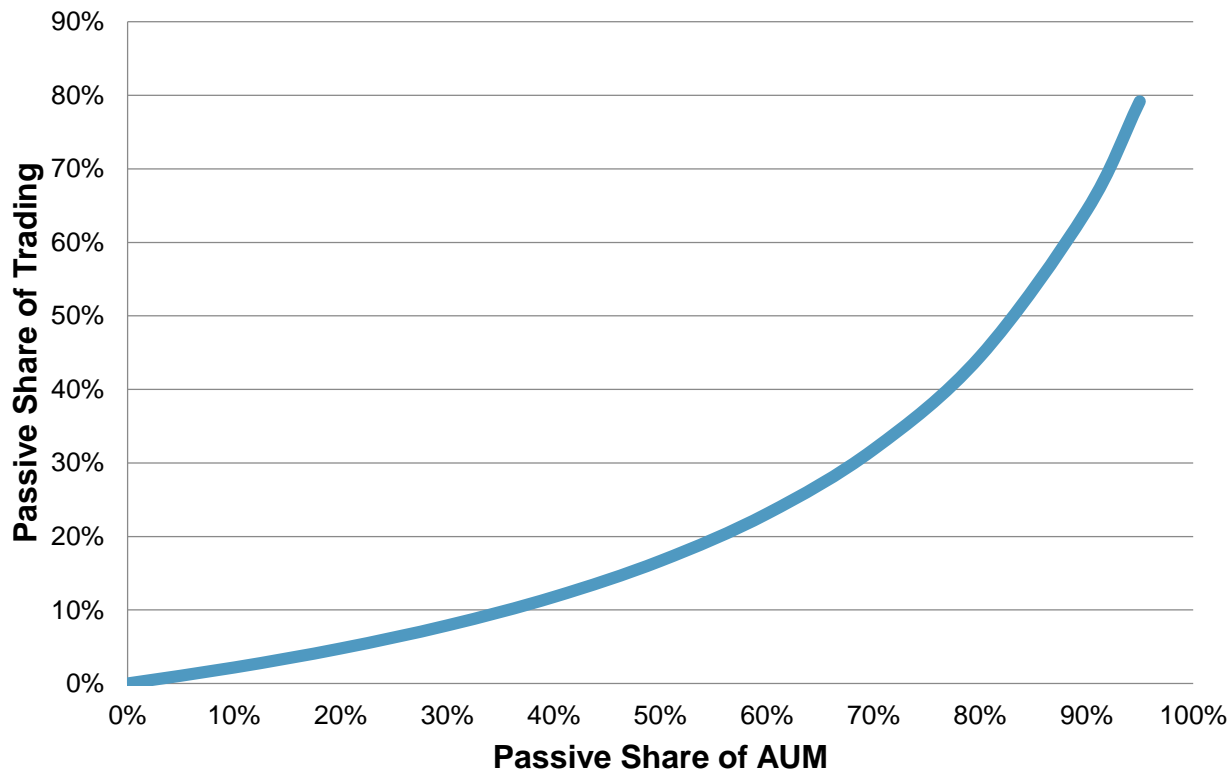
Complaint: Market efficiency depends on the work of active managers; index funds are “price takers,” and “too much” indexing could lead to a loss of capital market efficiency.

Response

- Factor indices are not price takers.
- Index trading contributes to price discovery at a macro level; the most heavily traded stock in the U.S. is an S&P 500 tracker.
- The growth of passive management raises the quality of the surviving active managers.
- Market efficiency depends on trading, not AUM per se; most individual stock trading is done by active managers.

Trading Consequences of Index Growth

Passive Share: Trading vs. AUM



Source: S&P Dow Jones Indices. Assumes active turnover = 50% per year, passive turnover = 10% per year. Chart is provided for illustrative purposes.

A Hypothetical Market

Stock	Return
A	10%
B	10%
C	10%
D	10%
E	50%
Average	18%
Median	10%

Source: Heaton, J.B., N.G. Polson, and J.H. Witte, "Why Indexing Works," October 2015, http://papers.ssrn.com/sol3/papers.cfm?abstract_id=2673262 and S&P Dow Jones Indices. Chart is for illustrative purposes only.

Possible Portfolio Combinations

Number of Stocks	Number of Portfolios	Median Return	Average Return	Probability of Outperformance
1	5	10%	18%	20%
2	10	10%	18%	40%
3	10	23%	18%	60%
4	5	20%	18%	80%

- *Expected* return is the same regardless of portfolio size, but
- Holding more stocks increases the *likelihood* of outperformance.

Source: S&P Dow Jones Indices. Chart is for illustrative purposes only.

How Might the Supply of Alpha Shift?

	B	C
Total Market Cap	\$20.0 T	\$20.0 T
% actively managed	90%	90%
Value Actively Managed	\$18.0 T	\$18.0 T
Value Outperforming	\$9.0 T	\$6.0 T
Value Underperforming	\$9.0 T	\$12.0 T
Losers' Underperformance (%)	4%	3%
Winners' Outperformance (%)	4%	6%
Total Underperformance (\$)	\$360 B	\$360 B

Distribution of outperformance and underperformance need not be symmetric.

Source: S&P Dow Jones Indices. Chart is for illustrative purposes only.

Final Thoughts

- Most active managers fail most of the time.
- The rise of indexing has saved investors billions of dollars in management fees without requiring a sacrifice in investment performance.
- Passive alternatives (including “smart beta”) create a difficult challenge for active management performance.
- Indexing has considerable capacity to grow without damaging market efficiency.

Performance Disclosure

The S&P 500 Low Volatility Index was launched April 4, 2011. All information presented prior to an index's Launch Date is hypothetical (back-tested), not actual performance. The back-test calculations are based on the same methodology that was in effect on the index Launch Date. However, when creating back-tested history for periods of market anomalies or other periods that do not reflect the general current market environment, index methodology rules may be relaxed to capture a large enough universe of securities to simulate the target market the index is designed to measure or strategy the index is designed to capture. For example, market capitalization and liquidity thresholds may be reduced. Complete index methodology details are available at www.spdji.com. Past performance of the Index is not an indication of future results. Prospective application of the methodology used to construct the Index may not result in performance commensurate with the back-test returns shown.

S&P Dow Jones Indices defines various dates to assist our clients in providing transparency. The First Value Date is the first day for which there is a calculated value (either live or back-tested) for a given index. The Base Date is the date at which the Index is set at a fixed value for calculation purposes. The Launch Date designates the date upon which the values of an index are first considered live: index values provided for any date or time period prior to the index's Launch Date are considered back-tested. S&P Dow Jones Indices defines the Launch Date as the date by which the values of an index are known to have been released to the public, for example via the company's public website or its datafeed to external parties. For Dow Jones-branded indices introduced prior to May 31, 2013, the Launch Date (which prior to May 31, 2013, was termed "Date of introduction") is set at a date upon which no further changes were permitted to be made to the index methodology, but that may have been prior to the Index's public release date.

The back-test period does not necessarily correspond to the entire available history of the Index. Please refer to the methodology paper for the Index, available at www.spdji.com for more details about the index, including the manner in which it is rebalanced, the timing of such rebalancing, criteria for additions and deletions, as well as all index calculations.

Another limitation of using back-tested information is that the back-tested calculation is generally prepared with the benefit of hindsight. Back-tested information reflects the application of the index methodology and selection of index constituents in hindsight. No hypothetical record can completely account for the impact of financial risk in actual trading. For example, there are numerous factors related to the equities, fixed income, or commodities markets in general which cannot be, and have not been accounted for in the preparation of the index information set forth, all of which can affect actual performance.

The Index returns shown do not represent the results of actual trading of investable assets/securities. S&P Dow Jones Indices LLC maintains the Index and calculates the Index levels and performance shown or discussed, but does not manage actual assets. Index returns do not reflect payment of any sales charges or fees an investor may pay to purchase the securities underlying the Index or investment funds that are intended to track the performance of the Index. The imposition of these fees and charges would cause actual and back-tested performance of the securities/fund to be lower than the Index performance shown. As a simple example, if an index returned 10% on a US \$100,000 investment for a 12-month period (or US \$10,000) and an actual asset-based fee of 1.5% was imposed at the end of the period on the investment plus accrued interest (or US \$1,650), the net return would be 8.35% (or US \$8,350) for the year. Over a three year period, an annual 1.5% fee taken at year end with an assumed 10% return per year would result in a cumulative gross return of 33.10%, a total fee of US \$5,375, and a cumulative net return of 27.2% (or US \$27,200).

General Disclaimer

Copyright © 2017 S&P Dow Jones Indices LLC, a division of S&P Global. All rights reserved. STANDARD & POOR'S, S&P, S&P 500, S&P 500 LOW VOLATILITY INDEX, S&P 100, S&P COMPOSITE 1500, S&P MIDCAP 400, S&P SMALLCAP 600, S&P GIVI, GLOBAL TITANS, DIVIDEND ARISTOCRATS, S&P TARGET DATE INDICES, GICS, SPIVA, SPDR and INDEXOLOGY are registered trademarks of Standard & Poor's Financial Services LLC, a division of S&P Global ("S&P"). DOW JONES, DJ, DJIA and DOW JONES INDUSTRIAL AVERAGE are registered trademarks of Dow Jones Trademark Holdings LLC ("Dow Jones"). These trademarks together with others have been licensed to S&P Dow Jones Indices LLC. Redistribution or reproduction in whole or in part are prohibited without written permission of S&P Dow Jones Indices LLC. This document does not constitute an offer of services in jurisdictions where S&P Dow Jones Indices LLC, S&P, Dow Jones or their respective affiliates (collectively "S&P Dow Jones Indices") do not have the necessary licenses. Except for certain custom index calculation services, all information provided by S&P Dow Jones Indices is impersonal and not tailored to the needs of any person, entity or group of persons. S&P Dow Jones Indices receives compensation in connection with licensing its indices to third parties and providing custom calculation services. Past performance of an index is not an indication or guarantee of future results.

It is not possible to invest directly in an index. Exposure to an asset class represented by an index may be available through investable instruments based on that index. S&P Dow Jones Indices does not sponsor, endorse, sell, promote or manage any investment fund or other investment vehicle that is offered by third parties and that seeks to provide an investment return based on the performance of any index. S&P Dow Jones Indices makes no assurance that investment products based on the index will accurately track index performance or provide positive investment returns. S&P Dow Jones Indices LLC is not an investment advisor, and S&P Dow Jones Indices makes no representation regarding the advisability of investing in any such investment fund or other investment vehicle. A decision to invest in any such investment fund or other investment vehicle should not be made in reliance on any of the statements set forth in this document. Prospective investors are advised to make an investment in any such fund or other vehicle only after carefully considering the risks associated with investing in such funds, as detailed in an offering memorandum or similar document that is prepared by or on behalf of the issuer of the investment fund or other investment product or vehicle. S&P Dow Jones Indices LLC is not a tax advisor. A tax advisor should be consulted to evaluate the impact of any tax-exempt securities on portfolios and the tax consequences of making any particular investment decision. Inclusion of a security within an index is not a recommendation by S&P Dow Jones Indices to buy, sell, or hold such security, nor is it considered to be investment advice. Closing prices for S&P Dow Jones Indices' US benchmark indices are calculated by S&P Dow Jones Indices based on the closing price of the individual constituents of the index as set by their primary exchange. Closing prices are received by S&P Dow Jones Indices from one of its third party vendors and verified by comparing them with prices from an alternative vendor. The vendors receive the closing price from the primary exchanges. Real-time intraday prices are calculated similarly without a second verification.

These materials have been prepared solely for informational purposes based upon information generally available to the public and from sources believed to be reliable. No content contained in these materials (including index data, ratings, credit-related analyses and data, research, valuations, model, software or other application or output therefrom) or any part thereof ("Content") may be modified, reverse-engineered, reproduced or distributed in any form or by any means, or stored in a database or retrieval system, without the prior written permission of S&P Dow Jones Indices. The Content shall not be used for any unlawful or unauthorized purposes. S&P Dow Jones Indices and its third-party data providers and licensors (collectively "S&P Dow Jones Indices Parties") do not guarantee the accuracy, completeness, timeliness or availability of the Content. S&P Dow Jones Indices Parties are not responsible for any errors or omissions, regardless of the cause, for the results obtained from the use of the Content. THE CONTENT IS PROVIDED ON AN "AS IS" BASIS. S&P DOW JONES INDICES PARTIES DISCLAIM ANY AND ALL EXPRESS OR IMPLIED WARRANTIES, INCLUDING, BUT NOT LIMITED TO, ANY WARRANTIES OF MERCHANTABILITY OR FITNESS FOR A PARTICULAR PURPOSE OR USE, FREEDOM FROM BUGS, SOFTWARE ERRORS OR DEFECTS, THAT THE CONTENT'S FUNCTIONING WILL BE UNINTERRUPTED OR THAT THE CONTENT WILL OPERATE WITH ANY SOFTWARE OR HARDWARE CONFIGURATION. In no event shall S&P Dow Jones Indices Parties be liable to any party for any direct, indirect, incidental, exemplary, compensatory, punitive, special or consequential damages, costs, expenses, legal fees, or losses (including, without limitation, lost income or lost profits and opportunity costs) in connection with any use of the Content even if advised of the possibility of such damages.

Any credit-related information and other related analyses and statements in the Content are statements of opinion as of the date they are expressed and not statements of fact. Any opinion, analyses and rating acknowledgement decisions are not recommendations to purchase, hold, or sell any securities or to make any investment decisions, and do not address the suitability of any security. S&P Dow Jones Indices does not assume any obligation to update the Content following publication in any form or format. The Content should not be relied on and is not a substitute for the skill, judgment and experience of the user, its management, employees, advisors and/or clients when making investment and other business decisions. S&P Dow Jones Indices LLC does not act as a fiduciary or an investment advisor. While S&P Dow Jones Indices has obtained information from sources they believe to be reliable, S&P Dow Jones Indices does not perform an audit or undertake any duty of due diligence or independent verification of any information it receives.

S&P Global keeps certain activities of its various divisions and business units separate from each other in order to preserve the independence and objectivity of their respective activities. As a result, certain divisions and business units of S&P Global may have information that is not available to other business units. S&P Global has established policies and procedures to maintain the confidentiality of certain non-public information received in connection with each analytical process.

In addition, S&P Dow Jones Indices provides a wide range of services to, or relating to, many organizations, including issuers of securities, investment advisers, broker-dealers, investment banks, other financial institutions and financial intermediaries, and accordingly may receive fees or other economic benefits from those organizations, including organizations whose securities or services they may recommend, rate, include in model portfolios, evaluate or otherwise address.